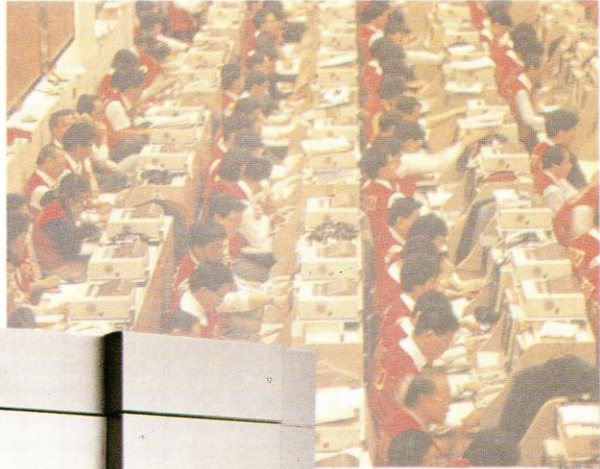
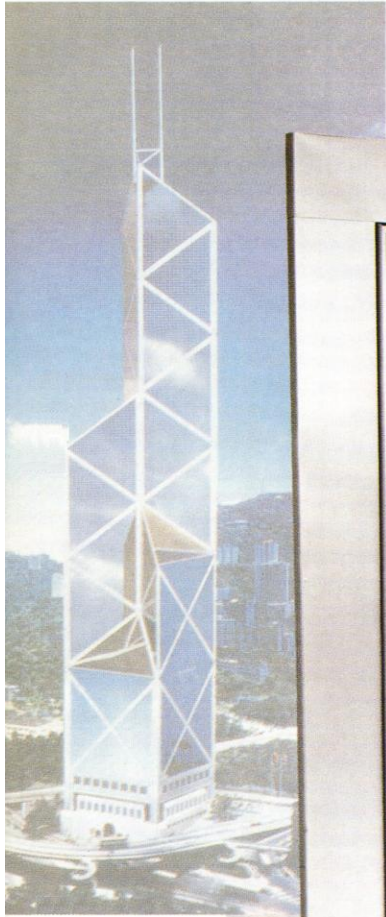
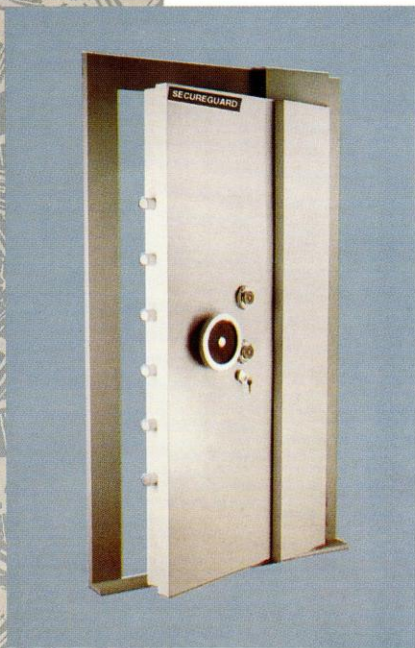
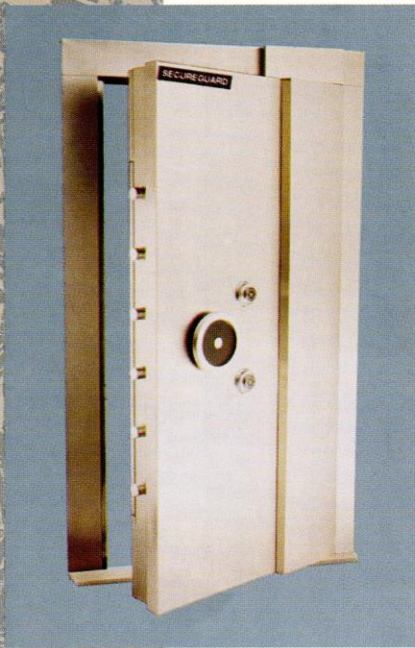


SECUREGUARD



TYPE 90 GC (3½") BANKER VAULT DOOR & TYPE 90 D (3½") STRONGROOM DOOR

This series of door is a result of extensive research and development specially designed to meet increasing demands on high security doors to protect the vaults and strongrooms built for financial institutions, jewellers, pawnshops and other end users.



CHASSIS

Effective burglary and fire resistance features are obtained by using thick and dense door chassis which are encased with specially formulated barrier material with proven resistance to high speed drills, oxyacetylene attacks, force and mechanical tools. The rigidity of the chassis enables the installation to be an integrated part of the vault upon completion.

DOOR

TYPE 90 D (3½") TDR STRONGROOM DOOR

The doors are press-formed with the lockcase forming entire door structure. The overall thickness of doorslab is a solid protective mass measuring 175 mm.

The locking mechanism area is protected by "Matrixite" a heavily reinforced barrier materials of 90 mm thick. 'KUBARS' are introduced in the manufacture of the doorslab to deflect point attacks by drills.

The door incorporates break-through features never seen before in the physical security industry that greatly enhances its resistance to physical attacks such as high speed drills, oxy-acetylene attacks, explosives and mechanical tools.

TYPE 90 GC (3½") ANTI-ARC BANKER VAULT DOOR

Besides incorporating the protective barrier materials as used in Strongroom door, the doorslab is further reinforced with a layer of special material to resist attack by oxy-arc cutter.

BOLTWORK

The boltwork comprises 6 (six) length 45 mm diameter heavy duty moving bolts fixed to a continuous bolt bar driven by the ever smooth eccentric cam mechanism securing the door at the front.

On the hinge side of the door, a vertical uniformly reinforced interlocking rebate system is being constructed to further strengthen the boltwork. This provides positive protection and also ensures the door will remain shut and locked condition even when the hinges are cut off.

LOCKING MECHANISM

The standard locking system is secured by a 4 (four) wheel keyless combination lock and a keylock. The combination lock is capable to provide 100,000,000 (1 hundred million) combination variations which can be changed by the user.



As an option, a 3 (three) wheel keyless combination lock which is of 1,000,000 (1million) combination can be installed, on the door.

'REAL' Keylock which has a maximum 97,000,000 key variation is used as a high security lock.

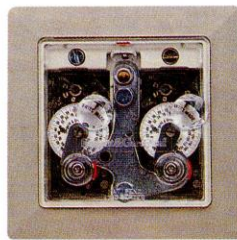
The locking system is strategically designed in that the boltwork remains locked even if the locks have been dislodged. The locks are designed as a measure only to unlock the boltwork system and blowing off the locks will immediately lead to the inability to unlock the boltwork system.

RELOCKING DEVICE

Although the boltwork remains in locked position even if the locks have been dislodged, dead relocking device is also incorporated to give added protection.

The relocking device is linked to shatter glass which will shatter and trigger the system when attempted attacks are made on the locks. The relocking device will jam up the boltwork during such attacks.

OPTIONAL EQUIPMENT



A two or three movement mechanical time lock can be fitted onto the door at the request of customer as an additional protection at additional cost.

This system will maintain the door in a fully locked position even with the use of correct keys and combination numbers until the pre-set time has elapsed. The time lock ensures optimum security over long weekends or holidays.

FINISH

The doors are available in 2 tone high quality paints.

However, at special requests of customers, the door can be supplied in stainless steel finish at additional costs.

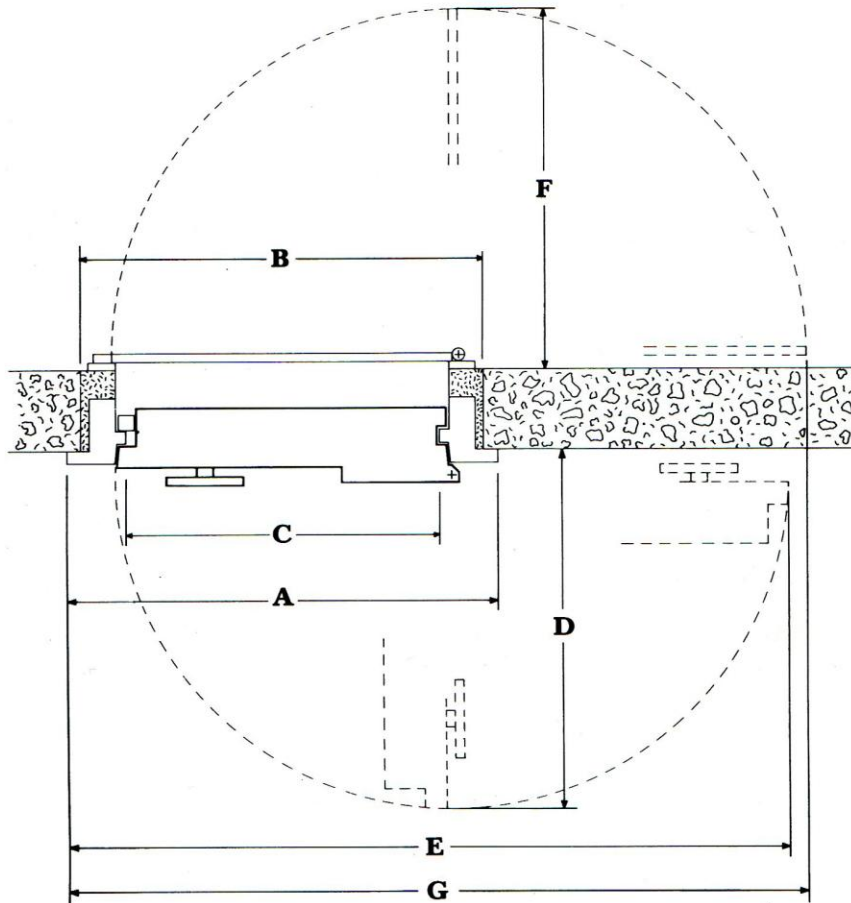
GRILLE GATE

To provide an additional measure of daytime security and ventilation of the strongroom during the day when the main door is open, a Regal Grille Gate can be fitted with the main door as optional.

Robustly constructed and secured by two high security keylock, Grille Gates are available in high quality paint finish or stainless steel finish.

When ordering, please specify the handling of the door whether left or right hung

TECHNICAL INFORMATION FOR INSTALLATION



	DESCRIPTION	DIMENSION	
		CM	INCHES
A	Overall door frame	W 120 x H 209	W 47.2 x H 82.3
B	Wall opening	W 112 x H 205	W 44.1 x H 80.7
C	Door's clear opening	W 87 x H 193	W 34.3 x H 76.0
D	Projection of door at 90°	100	39.4
E	Projection of door at 180°	201	79.1
F	Projection of gate at 90°	100	39.4
G	Projection of gate at 180°	208	81.9

Weights and dimensions are approximate only
 Consistent with our policy for continuing improvement, we reserve the right to alter any part of these specifications without notice and without incurring any obligations.

For the interest of our clients, certain details concerning the protective features of the two series of doors have not been disclosed in the brochure. However, such information can be obtained by consulting our authorised representative.